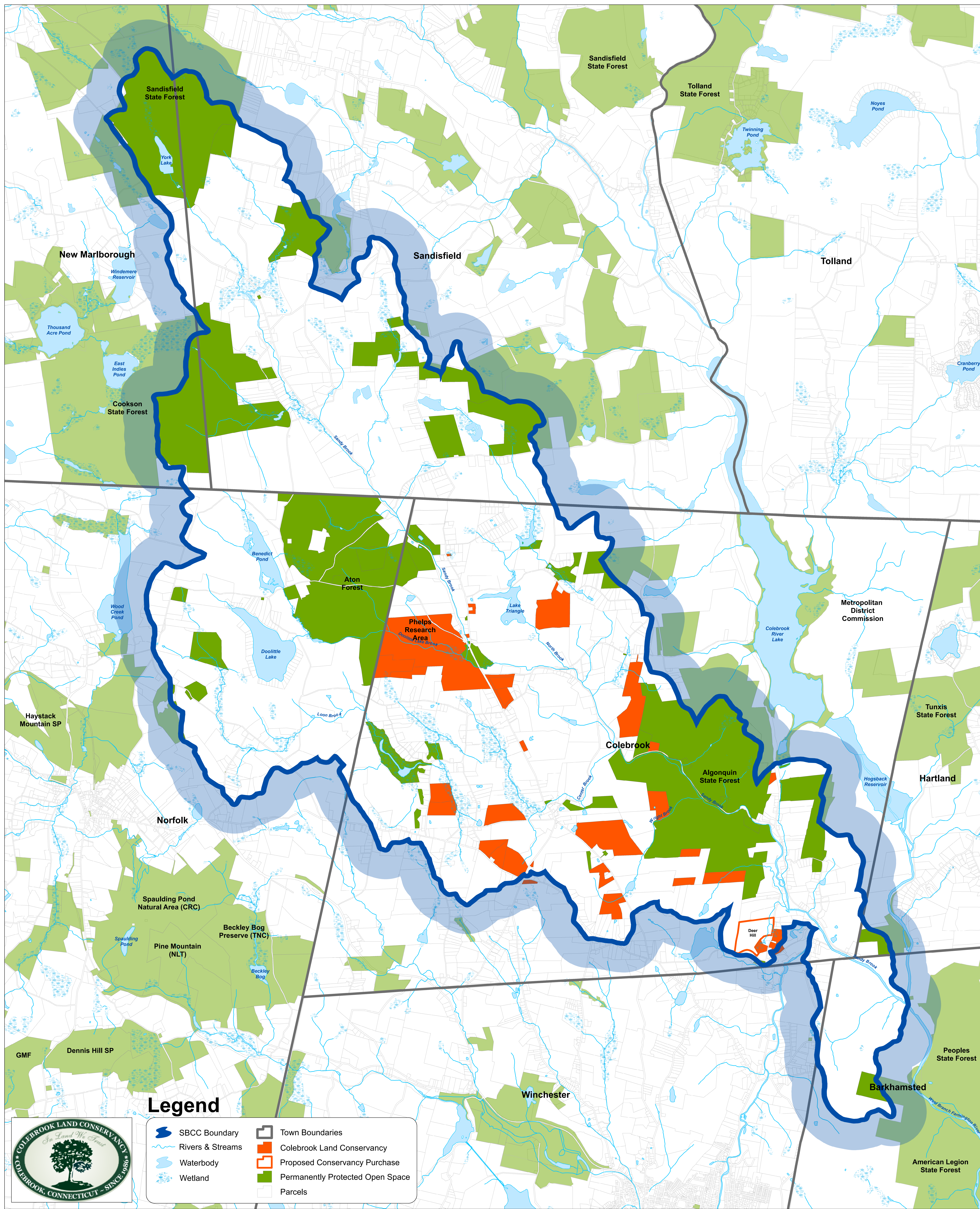


Sandy Brook Conservation Corridor & the Properties of the Colebrook Land Conservancy



DATA SOURCES:
 SBCC Boundary was developed by the Sandy Brook Conservation Corridor Partnership. Rivers and streams, waterbodies, wetlands, parcel, and town boundary data were obtained from CT DEEP or MassGIS. Permanently Protected Open Space data were obtained from MassGIS in Massachusetts, and the Litchfield Hills Greenprint Collaborative in Connecticut. Colebrook Land Conservancy property data were obtained from the Litchfield Hills Greenprint Collaborative.